



**Product Sustainability
Training:**
Mastering Eco-Label, LCA,
PCF and EPD for Enhanced
Product Sustainability



Product Sustainability Training

In today's increasingly eco-conscious marketplace, consumers are more vigilant about choosing climate-friendly and environmentally conscious products. The challenge, however, is accessing trustworthy information to make informed decisions. Life Cycle Assessments (LCAs), Environmental Product Declarations (EPDs) and Product Carbon Footprints (PCFs) are key tools that companies can use to provide credible information and demonstrate their commitment to sustainability.

This training course provides comprehensive guidance on these tools to enable companies to not only assess product sustainability, but also effectively communicate their environmental impacts to external stakeholders. Participants will gain a deep understanding of how to utilize these tools to take on product stewardship, boost their company's sustainability profile and comply with regulatory requirements.

Regulatory Framework

This training is based on key international standards, including ISO 14020/14021 for environmental labels and declarations, ISO 14040/44 for LCA, ISO 14067 for PCF, ISO 14701 and ISO 14025/EN 15804 for EPDs. These frameworks provide essential guidelines to ensure compliance with global sustainability requirements and help companies enhance their transparency and credibility.

Target Group

- ▶ Sustainability managers
- ▶ Managers and employees involved in purchasing decisions
- ▶ Sales and marketing professionals in client contact
- ▶ Employees seeking an overview of environmental footprinting tools (LCA, EPD, PCF)

Learning Units

1. Relevance of product sustainability for companies
2. Fundamentals of eco-label (Type I, Type II, Type III)
3. Methods for the evaluation of environmental impacts of products
 - 3.1 Life Cycle Assessment (LCA) and overall framework
 - 3.2 Product Carbon Footprint (PCF)
 - 3.3 Environmental Product Declaration (EPD)
 - 3.4 Critical Review
 - 3.5 Comparison of assessment tools
 - 3.6 Required resources
4. Outlook: transition from linear to circular economy
5. Wrap-up: Main challenges and things to watch out for





Learning Objectives

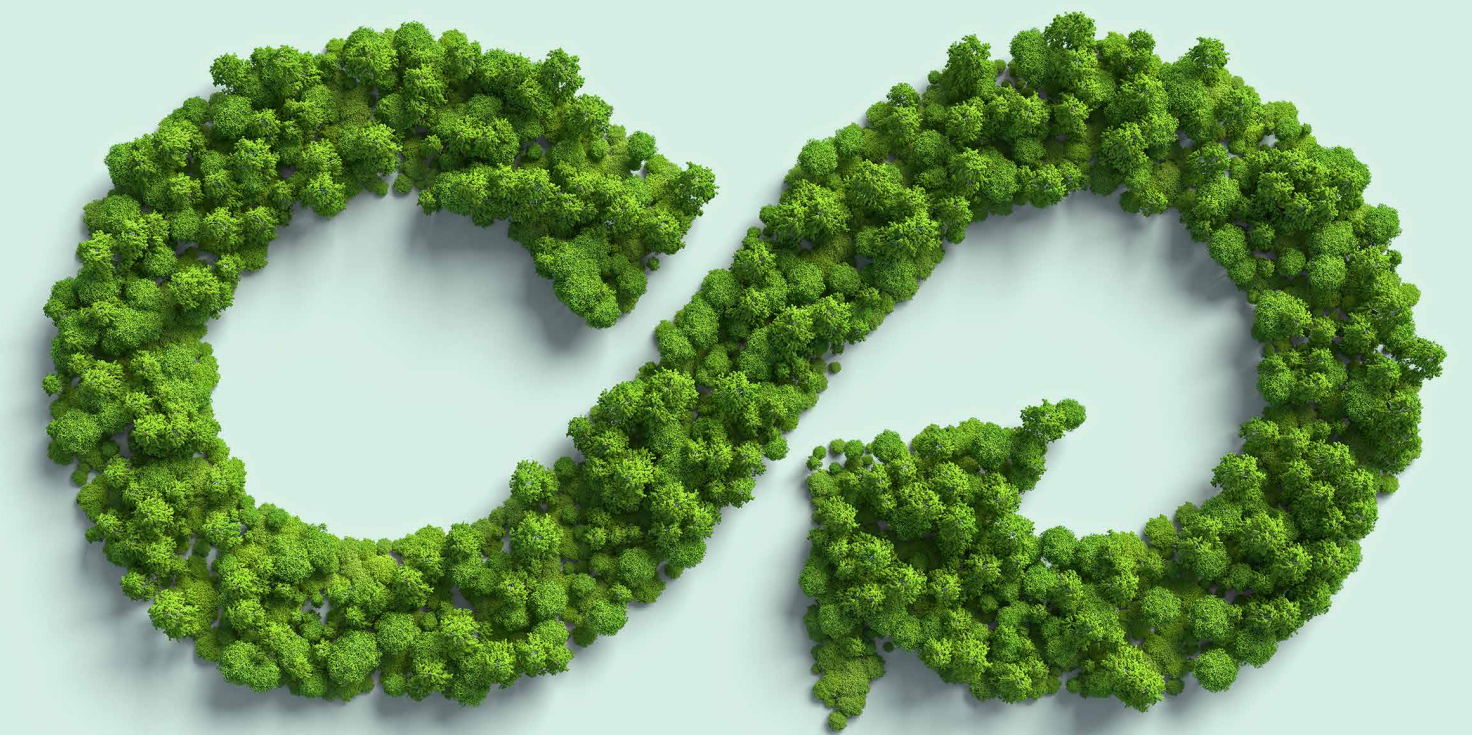
- ▶ Summarize the concept of environmental footprints and the tools available.
- ▶ Differentiate between Type I, II, and III eco-labels/environmental claims.
- ▶ Outline the main steps of a life cycle assessment (LCA) process.
- ▶ Analyse results of an LCA.
- ▶ Describe the key environmental impact categories and their assessment tools.
- ▶ Explain the differences between LCA, EPD, and PCF.
- ▶ Choose the suitable assessment tool for different corporate cases.
- ▶ Summarize the benefits of critical reviews.
- ▶ Explain where and how the information derived from environmental footprints can be applied and used.

Training Course Details

- ▶ **Delivery format:** Virtual classroom or face-to-face
- ▶ **Duration:** 1 day (8 teaching units, 360 minutes)
- ▶ **Entry requirements:** No special requirements
- ▶ **Examination procedure:** Exam at the end of the course
- ▶ **Completion:** DEKRA certificate after successful completion
- ▶ **Technical requirements:**
Stable internet connection, up-to-date operating system, and browser, microphone, speakers, webcam

Why DEKRA?

- ▶ Learn from experienced professionals with in-depth knowledge of sustainability practices to identify hotspots and potential for product improvement.
- ▶ Gain practical insights from our product sustainability experts with long-year expertise in LCA, PCF and EPDs.
- ▶ DEKRA's global network ensures you receive the most current and relevant information.



A photograph showing two men in a meeting. One man is in the foreground, partially visible, looking towards the other man. The second man is in the background, looking at a laptop screen. They are in an office setting with greenery visible in the background.

DEKRA Sustainability Advisory & Training

Supporting your efforts to ensure a safe workplace, a healthy workforce and environmentally sustainable operations, our training and advisory services help you to develop, implement and maintain effective management and reporting strategies. Experts in modern teaching techniques pick the best fitting learning approach to provide the knowledge you need to successfully integrate efficient procedures. Consultants with years of experience are on hand to guide you when targeting your unique corporate sustainability and carbon footprint goals by using appropriate digital tools and databases.

www.dekra.com

[Would you like more information?](#)

[Contact Us!](#)