



ECF gratefully acknowledges financial support from the European Commission.



# Increasing Health and Road Safety for Cyclists

ITF 2016 – DEKRA Side Event

Dr Bernhard Ensink

Secretary General

[b.ensink@ecf.com](mailto:b.ensink@ecf.com)

Rue Franklin, 28 1000 Brussels, Belgium Phone: +32 2 880 92 74 Fax: +32 2 880 92 75 [office@ecf.com](mailto:office@ecf.com)

[www.ecf.com](http://www.ecf.com)



Founded 1983 ca. 80 members worldwide

Based in Brussels; 20 staff members

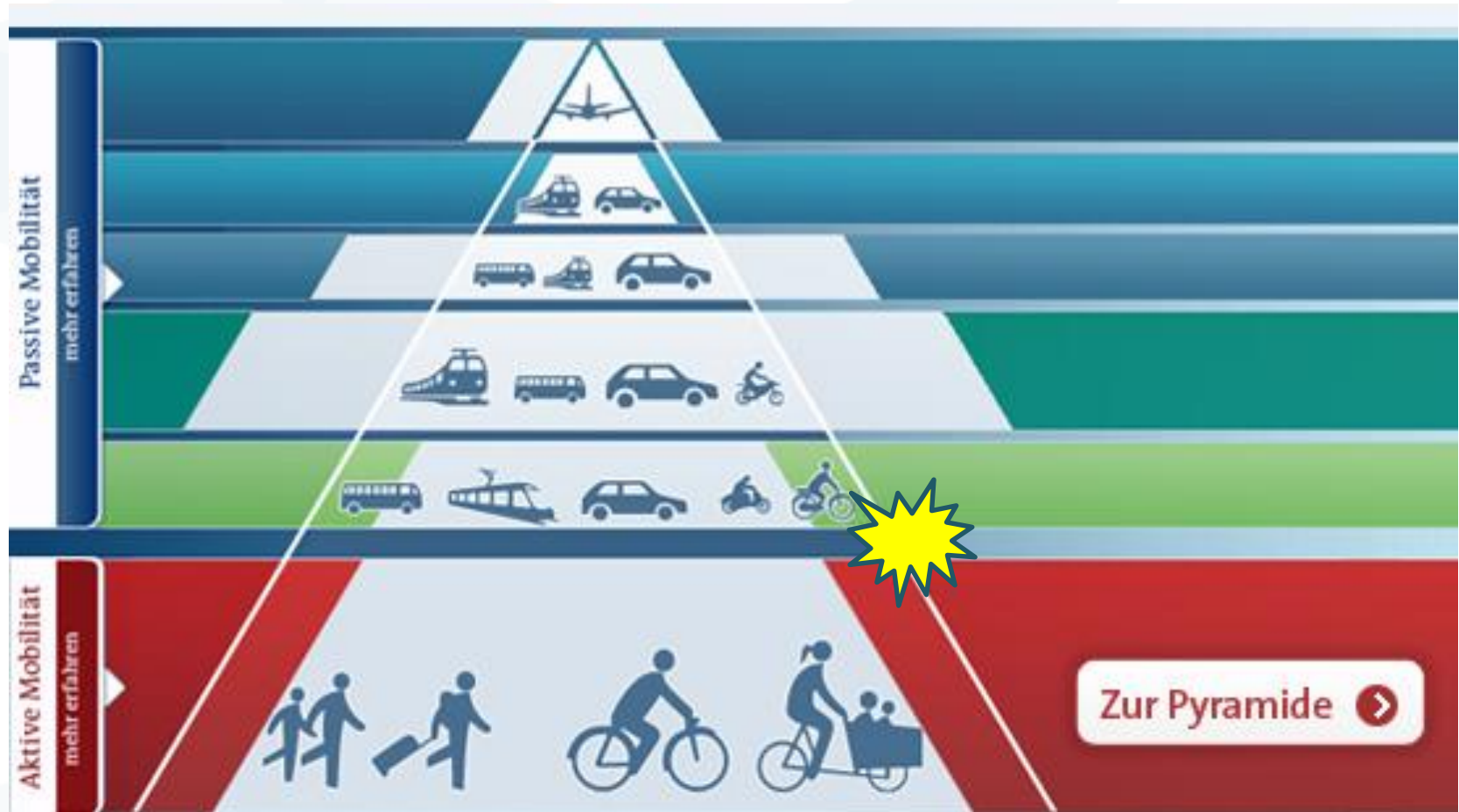
Founders of the World Cycling Alliance

One goal: More people cycling more often

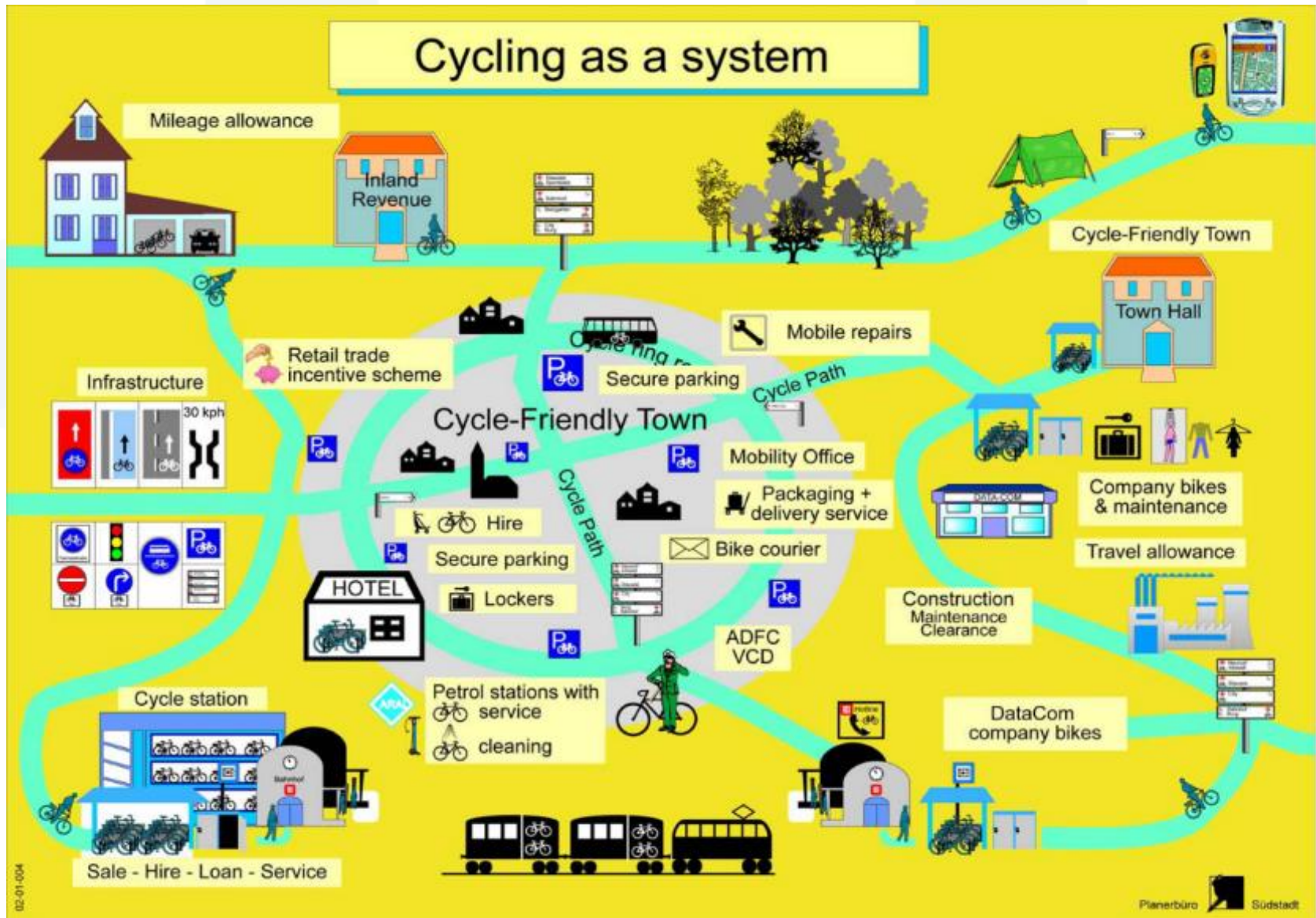


More on: [www.ecf.com](http://www.ecf.com)

# Walking & Cycling at the Basic of all Urban Mobility Policies

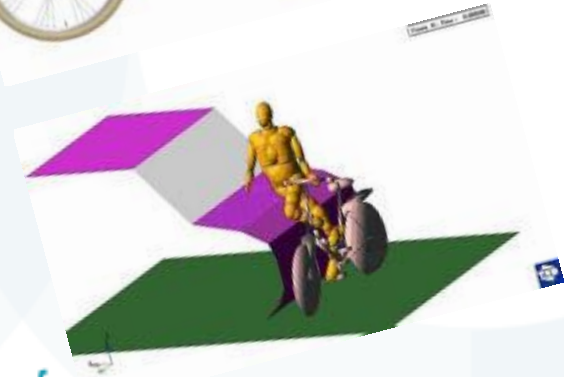
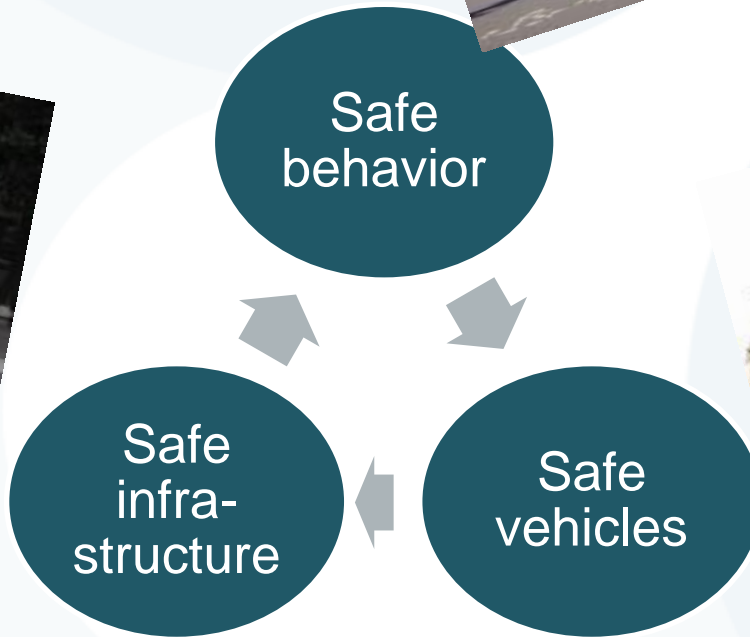


# Cycling as a system





# Three pillars of Road safety for Cyclists ....



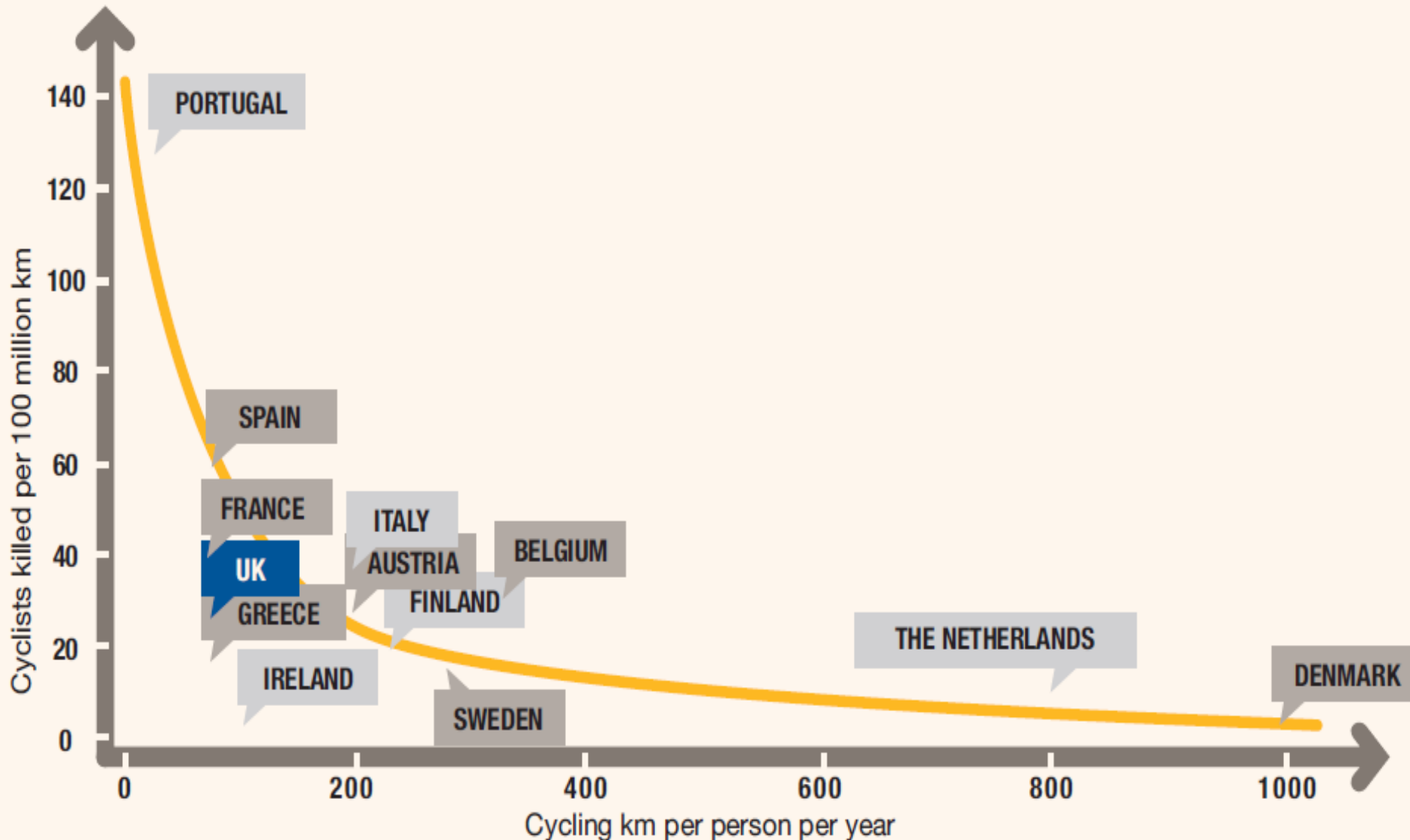
# Road Safety *and health!*

“... the health benefits of cycling are often overlooked in policy discussions.”

OECD/ITF(2013),  
*Cycling, Health and Safety*



# More cycling dangerous? It's a myth! Safety in numbers !





ADFC e.V. @FahrradClub

1h

Pro Tag stirbt 1 Radler i D. @RideofSilence erinnert. Wir fordern fehlertolerante Infra, KfZ-Technik, Rücksichthoch3



“Every day 1 cyclist dies in Germany ... We call for  
forgivable infrastructure  
vehicle-technology  
and take care!”

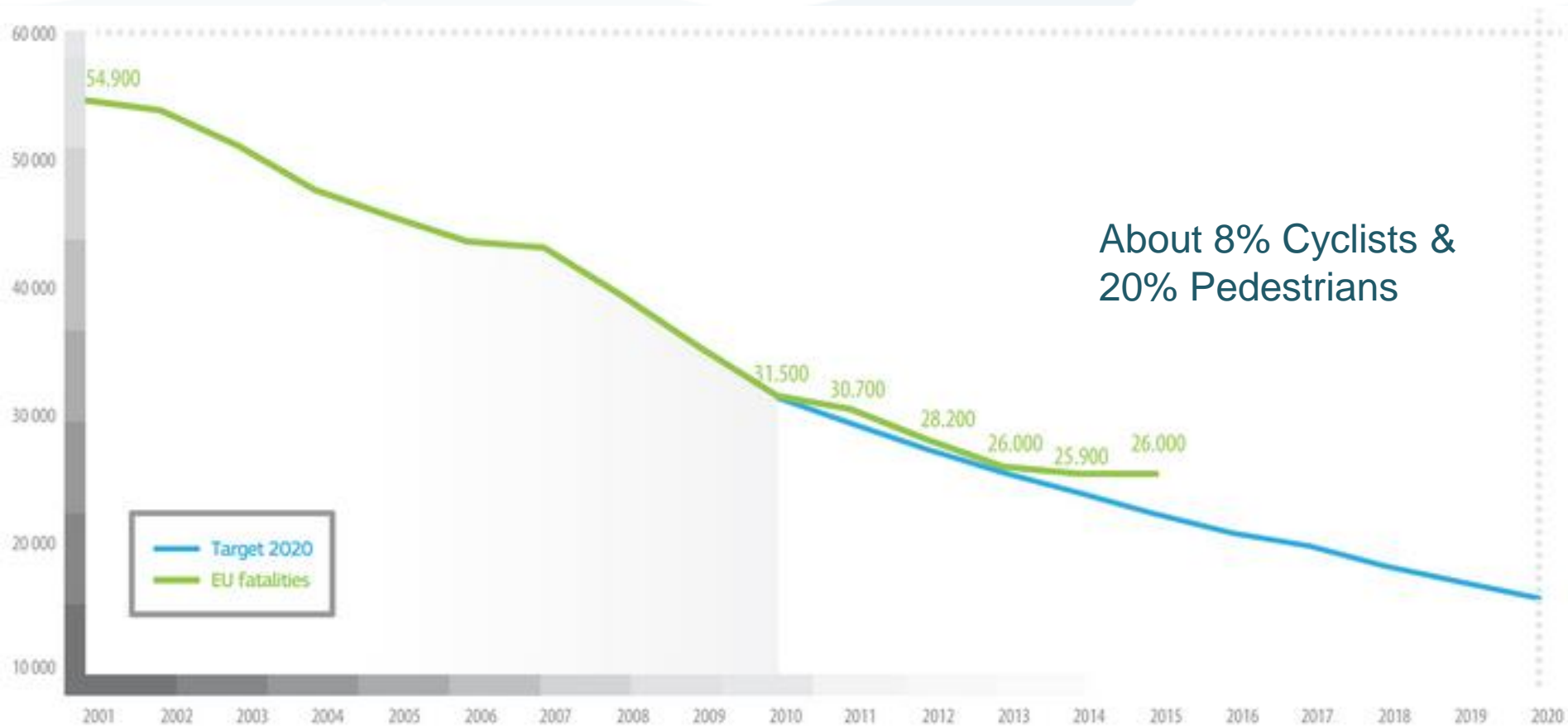


# A Moral Issue

# A Moral Issue?

- About 1.25 million people killed on the road worldwide
- About 26,000 people killed on EU28 roads, 70 per day!
  - every year !

# EU road fatality absolute numbers



# Latest EU figures on road safety

- Cyclists make up 8% of all who died on the road in the EU
- From 2004-2013 there was a reduction of 32% in bicycle fatalities, only 4% between 2010 and 2014
- For the first time road fatalities have increased over the past year

# Infrastructure !



# Safe Infrastructure

- Traffic calming – 30 kph zones
  - EU Parliament has committed to 30 kph as **default speed** in urban areas
  - Shared spaces can work
- Cycle lanes/tracks/streets
  - **Separation** depends on function and speed of motorised transport on the road
- Intersections need special attention
  - Around 70% accidents at intersections

# Main routes



# Top local routes



[www.eci.com](http://www.eci.com)

# Cycle track





# Cycle lane





# Separated cycle path in NL



Afbeelding 2.2. Bestaande fietspaden langs verkeersaders blijven een functie vervullen voor fietsers.

[www.eci.com](http://www.eci.com)

Source: Fietsberaad

# Tunnel for cyclists in NL



Door een fietstunnel op een logische plaats te leggen, ontstond in Apeldoorn een bundeling van fietsers op een route door een verblijfsgebied.

[www.eci.com](http://www.eci.com)

Source: Fietsberaad

# Tunnel for cyclists in NL



Waar fietsroutes de hoofdverkeersaders kruisen kiest Zwolle zoveel mogelijk voor ongelijkvloerse oplossingen.

[www.ecf.com](http://www.ecf.com)

Source: Fietsberaad



# Bridge in NL



Afbeelding 2.4. Fietsbrug in Zwolle, over een belangrijke verkeersader in de stad.

# Advisory lane, bus/bike lane, advanced stop line





# Shared Space in UK (Brighton)



[www.ecf.com](http://www.ecf.com)

# Shared space concept in NL (Haren)



Before implementation ...



After implementation ...

# Velo-city conference series: worldwide exchange of best practice



Next edition: Velo-city 2017 Arnhem-Nijmegen (June 13 – June 16 2017)

[www.velo-city2017.com](http://www.velo-city2017.com)

[www.ecf.com](http://www.ecf.com)

# Vehicles

# TNO Smart bike with sensors

## The intelligent bicycle





# Safe Heavy Goods Vehicles



- The height of the drivers seating position too high
- Direct vision specification–**Why don't they exist?**
- No Deflective shape – flying brick!
- We want the latest automatic sensing and braking to be mandatory on all large vehicles

# Safe Cars – External Airbags!



# Safe Cars – ISA!

## Intelligent Speed Adaptation

Respecting Speed Limits:

A **Moral** Issue !



# Respecting Speed Limits - ISA

## HOW IT WORKS

**1** Satnav-style monitor features a highly-detailed digital map programmed with speed limits right down to 20mph residential zones.



**2** Operated in two modes - voluntary or advisory - it also has an override button to switch it off altogether.

**3** If a driver reaches the speed limit in voluntary mode sophisticated electronics fitted to the car cut in to prevent the engine from going faster.



**4** If the car travels into a 30mph area from a 40mph zone the car is automatically and gradually slowed down.



# A Moral Issue!

1. About 1.25 million people killed on the road worldwide
2. Speeding of cars is one of the main killers!
3. The technology to avoid speeding is there!

**=> Let's draw the Moral Obligation from these Facts:**

**Implementation of Intelligent Speed Adaptation in cars now !**



# Behaviour

# Safe Behavior ...

- Education of car drivers
- Education of professional drivers
- Enforce traffic laws (drink driving, speeding ...)
- Education of cyclists



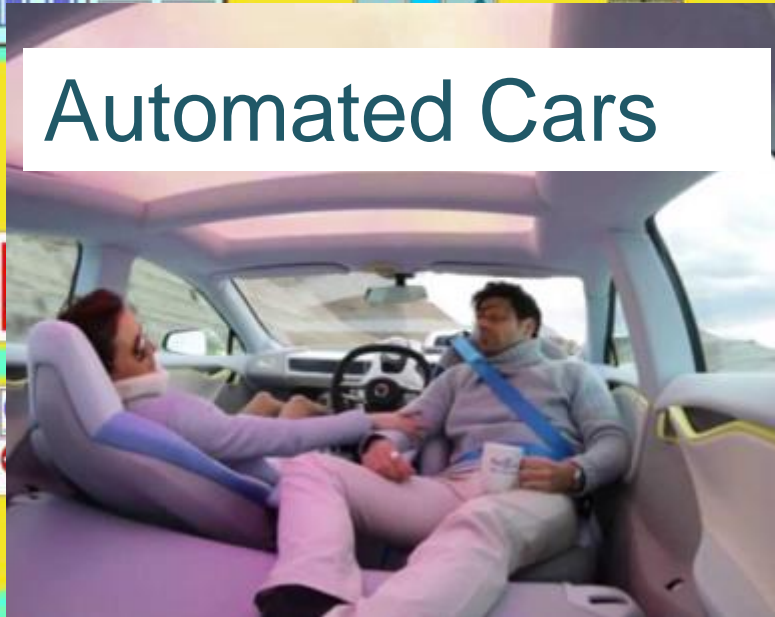
# New Issues

# Cycling as a system

Mileage allowance

Inland  
Revenue

## Automated Cars



## Speed Pedelecs



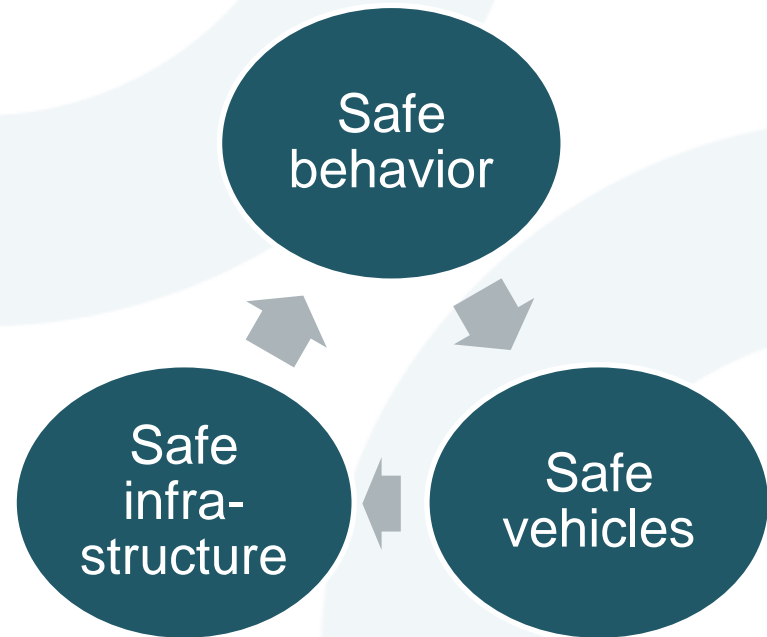
service  
cleaning

DataCom  
company bikes

Sale - Hire - Loan - Service

Planerbüro Südstadt

# What will Automated Cars & Speed- Pedelecs mean for the Road safety of Cyclists?





# Conclusions

# Conclusions

- Infrastructure, infrastructure, infrastructure
- **A Moral Issue!** Motorized Vehicles must be made safer for those outside: **Intelligent Speed Adaptation (ISA) NOW!**
- Take Care!



# Take Care!

[b.ensink@ecf.com](mailto:b.ensink@ecf.com)

[@BEnsinkSGECF](#)

[www.ecf.com](http://www.ecf.com)