

Mechanized Testing Nuclear

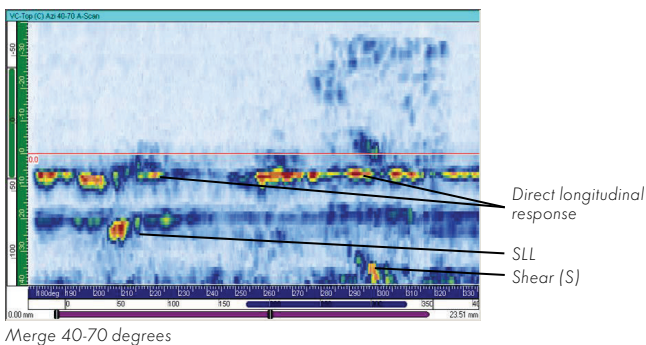


PUTS – Mechanized Inspection of stainless steel welds in piping

DEKRA Industrial – Mechanized Testing has developed a testing system for stainless steel welds.

- > The PUTS inspection system is qualified for Phased Array techniques used at all Swedish NPPs according to ENIQ
- > Full weld inspection from one side of the weld

Skewed defects identified by the orientation of responses relative to the general weld geometry and structural noise. This is evident in both the direct and mode converted responses.



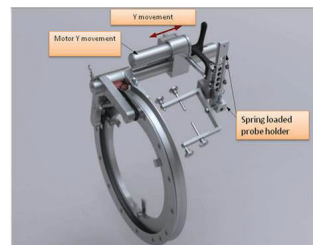
The inspection include detection, characterisation, length and height sizing of circumferential defects in the weld and heat affected zone (HAZ).

Detection:

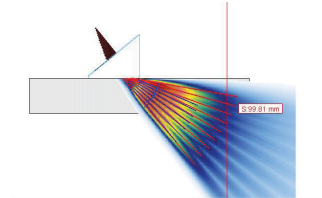
- > All relevant defects can be detected single sided with weld cap in place, $t=6-40$ mm

Sizing:

- > All relevant defects can be height sized single sided with weld cap removed $t=15-40$
- > All relevant defects can be length sized single sided with weld cap in place, $t=6-40$ mm



The pipe scanner



Phased Array

DEKRA Industrial AB
Sweden
+46 (0)10 - 455 1000
www.dekra-industrial.se

With reservations for errors and changes.

DEKRA - Global partner for a safe world

DEKRA is working for increased safety in a variety of industries through independent inspection, testing and certification. DEKRA is Europe's leading expert organization with 44 000 employees in 60 countries.