

Mechanized Testing Nuclear



Tube inspection from OD

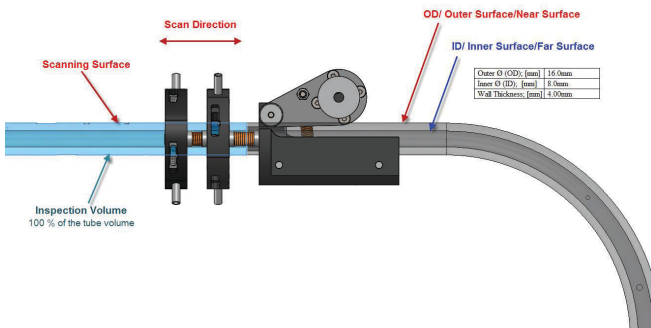
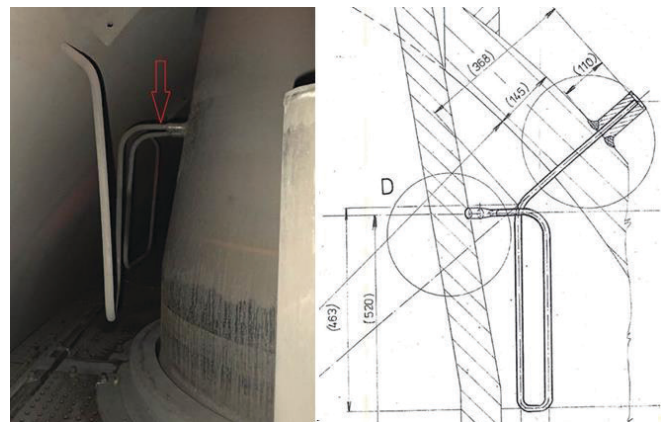
DEKRA Industrial – Mechanized Testing has developed a solution for the inspection of small tubes from the outside by using an encircling Multi-Element Probe for Pulse Echo immersion technique.

The probe can pass bends and the collection of data is made with the encoded movement covering the full thickness of the tube.

The detection target is:

- > Pits on the outer surface of the pipe with a depth of $\geq 0,4$ mm and a diameter $\geq \varnothing 2$ mm.
- > Surface Corrosion on the inside surface of the pipe. The residual thickness shall be in the range of 0.7 - 4.0 mm (minimum design thickness 0.7 mm).

The unique design principles allow for a very fast and reliable inspection of a complex geometry.



Tube OD Testing – Ultrasonic immersion technique with encircling probe

DEKRA Industrial AB
Sweden
+46 (0)10 - 455 1000
www.dekra-industrial.se

With reservations for errors and changes.

DEKRA - Global partner for a safe world

DEKRA is working for increased safety in a variety of industries through independent inspection, testing and certification. DEKRA is Europe's leading expert organization with 44 000 employees in 60 countries.