

Atibaia/SP, May 24, 2022

Subject: **Update of Inmetro Regulation n.º 90:2022 – Plugs and sockets**

As a result of the publication on March 9, 2022, of Inmetro Regulation n.º 90:2022 of Plugs & Sockets, DEKRA Certification BV communicates the main changes, deadlines and transitional provisions for your knowledge and relevant actions.

Deadlines and transitional provisions

- The publication of Inmetro Regulation n.º 90:2022 does not imply the need to start a new certification process based on the requirements consolidated herein;
- The certificates already issued will be revised, with reference to the Inmetro Regulation n.º 90:2022, during the next maintenance; and
- During the next maintenance, the requirements established by Inmetro Regulation n.º 90:2022 will be considered.

The Inmetro Regulation n.º 85:2006 is no longer valid.

The Inmetro Regulation n.º 90:2022 replaced it and this new one is already in force and establishes all the necessary requirements for the certification process and also for the applicable tests.

Here you can find the link to the mentioned new one:

<https://www.in.gov.br/web/dou/-/portaria-n-90-de-9-de-marco-de-2022-387379738>

The main changes established by the Inmetro Regulation n.º 90:2022 are:

Main changes	Inmetro Regulation n.º 85:2006	Inmetro Regulation n.º 90:2022
Use of test reports already issued	Test reports issued by a laboratory accredited by an Inmetro/Cgcre or ILAC member 2 years before the beginning of the certification process or maintenance, were allowed	Test reports issued by a laboratory accredited by an Inmetro/Cgcre or ILAC member before the beginning of the certification process or maintenance, are not allowed
Sampling selection	Not obligatory, for initial certification, if the customer provided test report(s) already issued. For maintenance, the sampling selection was obligatory.	All the products to be certified must have their sampling selection after the beginning of the certification process or maintenance
Samples, counter-proof and witness	For maintenance, the selection of samples, counterproof and witness was mandatory	For purposes of initial certification, maintenance or recertification, the selection of samples, counterproof and witness is mandatory
Updated the standard versions	Standard versions: ABNT NBR NM 60884-1:2004 and NBR 14136:2002	Updated the standard versions to: NBR NM 60884-1:2010 and NBR 14136:2012 corrected version 5:2021
Validity of certificates	The validity of the certificates was of 2 years	The certificates of plugs and sockets will have validity of 6 years

Main changes	Inmetro Regulation n.º 85:2006	Inmetro Regulation n.º 90:2022
Maintenance tests	For maintenance, tests of 1 st , 2 nd , 3 rd and 4 th semesters were required.	The sequence of tests must be done to each semester, considering 1 st up to 4 th semesters. After concluded the tests of 4 th semester, a new sequence of tests must be initiated from 5 th up to 9 th . In the 10 th and 11 th semesters, the recertification tests are required
Customer Complaint Treatment Audit	Not required	Audit for treatment of customer complaints as Inmetro Regulation n.º 90:2022 and 200:2021 (RGCP)
Seal of Conformity Identification	Old Seal of Conformity Identification	New Seal of Conformity Identification as Inmetro Regulation n.º 90:2022 § 1º Factories and importers of families of plugs and sockets already certified will have 36 (thirty six) months, counted from the publishing date of the Portaria, for adjustment of the processes of certification in order to have met, on package, the conditions and layout applicable of the Seal of Conformity Identification - Model 1 of Annex II of the new Portaria. § 2º The Seal of Conformity Identification may be kept until the deadline established in § 1º according to the conditions and layout of Model 2 of Annex II of the new Portaria.
ISO 9001 requirement for factory audit	The requirements of ISO 9001:2000 were required to be audited	Updated and changed the requirements as ISO 9001:2015 for audits of initial certification, maintenance and recertification

New Seal of Conformity Identification

The supplier must affix the Conformity Identification Seal on the package and on the product, as described below.

Seal of Conformity Identification on the PACKAGE:

- On the package, the Complete Seal can be printed or a label can be used, with indelible characteristics, as long as it obeys the defined dimensions.
- On individual product packages, the complete Seal model must be used. However, in cases where there is no space for the application of the complete Seal or in cases where the application is made by printing directly on the package, the use of the "Compact Seal" without the word "Segurança" will be allowed. In this case, the word "Segurança" will be allowed to be printed on the right or left side of the Seal, according to the model as follow, respecting the minimum dimension of the Seal, 5mm wide, and the font to be used in the word "Segurança".
- On collective package of products, used for packing individual packages already properly identified, although the "one color" or "Compact Seal" must preferably be used, the application of the "Compact Seal" without the word "Segurança" is allowed, or the application of a sentence mentioning "this package contains certified products".

Model 1 - Complete Seal



Pantone 1235

- 100%
- 80%

CMYK

- C2 M34 Y94 K0
- C2 M27 Y90 K0

Font
Univers
Univers Black

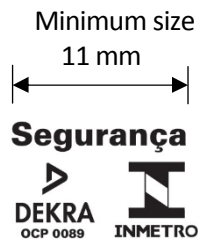


Shades of Gray

- 100%
- 90%
- 70%



Model 1 - Compact Seal:



Model 1 - Compact Seal, with the word “Segurança” on the right or left side:



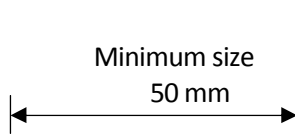
Model 1 - Compact Seal, without the word “Segurança”:



Seal Conformity Identification on the PRODUCT:

- a) The model of the Seal to be affixed to the product is Model 1.
- b) When the Seal is stamped or inserted, if it does not fit on the front, it can be affixed to other parts of the product.
- c) In products where there is no space for the application of the “Compact Seal” or in cases where the application is made by direct engraving on the product through the use of a mold, the use of the “Compact Seal” without the word “Segurança” will be allowed.
- d) The use of the “Compact Seal” with a minimum dimension smaller than 11mm will be allowed, respecting the proper proportions.
- e) Considering the previous conditions, exclusively for plugs and sockets certified until the effective date of the Inmetro Regulation n.º 90:2022, the layouts of Model 2 below may be maintained for affixing to the product.

Model 2 - Complete Seal



Pantone 1235

- 100%
- 80%

CMYK

- C2 M34 Y94 K0
- C2 M27 Y90 K0

Font
Univers
Univers Black

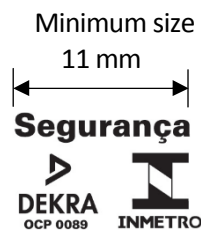


Shades of Gray

- 100%
- 90%
- 70%



Model 2 - Compact Seal:



Model 2 - Compact Seal, with the word “Segurança” on the right or left side:



When the accessory is commercialized together or coupled with other components/products not subject to certification, the Seal of Conformity Identification must not be affixed on the package of the product, but only on the accessory. In this case, the package can only contain the expression “Contém produto certificado”, or another that has a similar meaning (clarifying that the Seal of Conformity Identification does not refer to the product, as a whole itself).

Best Regards,



Nelson Coelho
Certification Manager
DEKRA Certification BV