



# **BMW CCC Secure Share Activation Guide: BMW Parts Restrictions Portal**

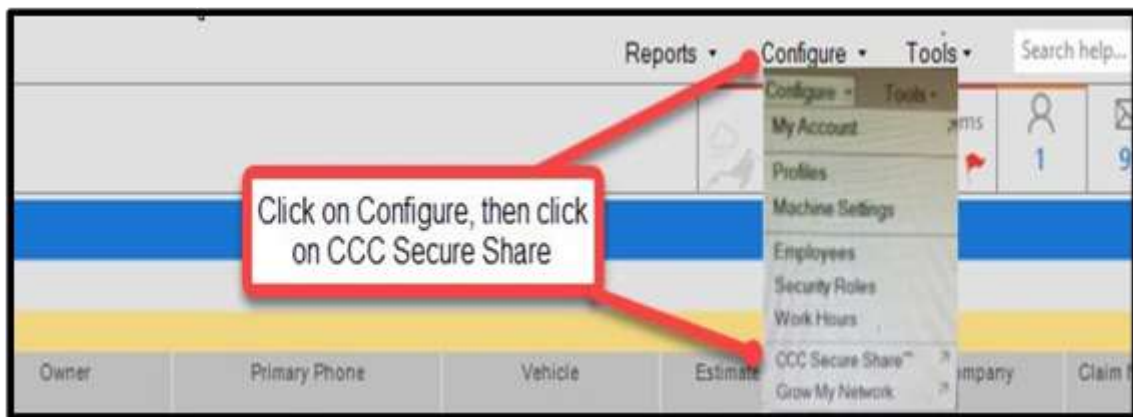
The following information will serve as a comprehensive guide to activating CCC Secure Share and enabling the connection between CCC and the BMW Parts Restrictions Portal powered by the iQCLive DEKRA platform.



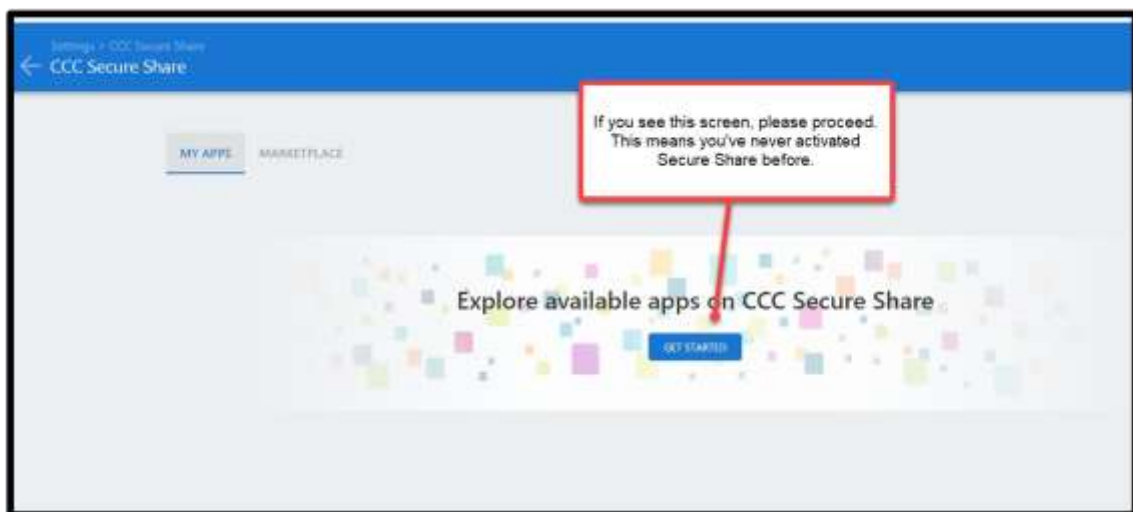
**The following information will assist in linking the BMW Parts Restrictions Portal with CCC using the CCC Secure Share Connection.**

This connection has been established to allow fast, safe, and stable interactions between platforms such as CCC and the BMW Parts Restrictions Portal. The process is very simple and can be initiated directly from your CCC software as shown in the steps below:

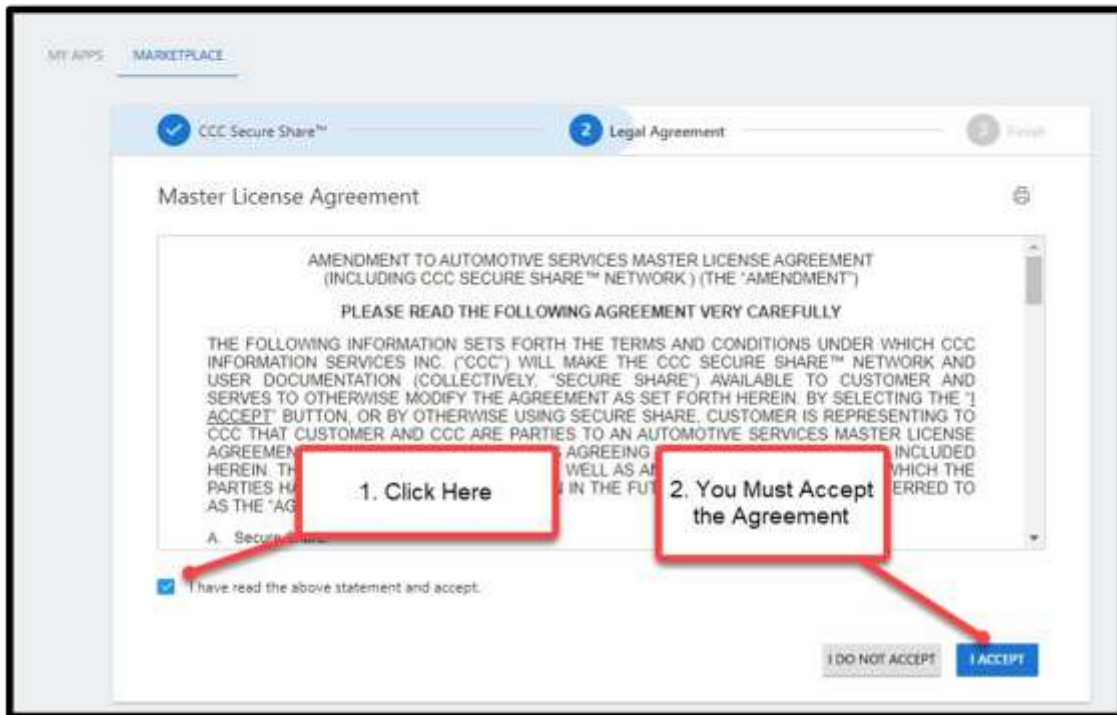
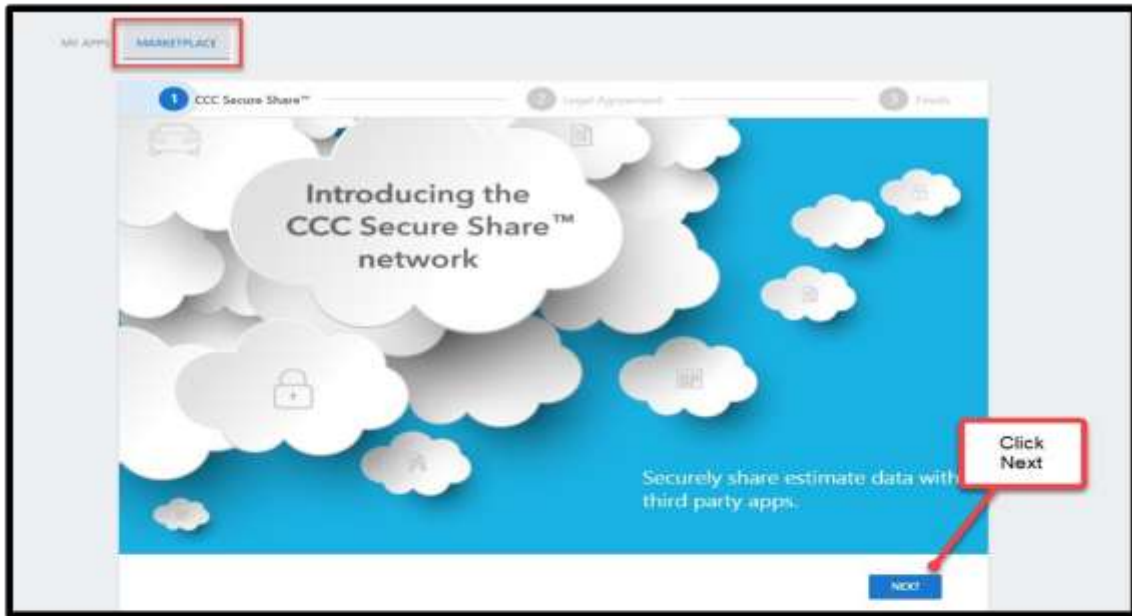
1. Once you are logged in to your CCC estimating platform, navigate to the top right portion of the screen where you will see a header. Click the dropdown labeled **“Configure”**.



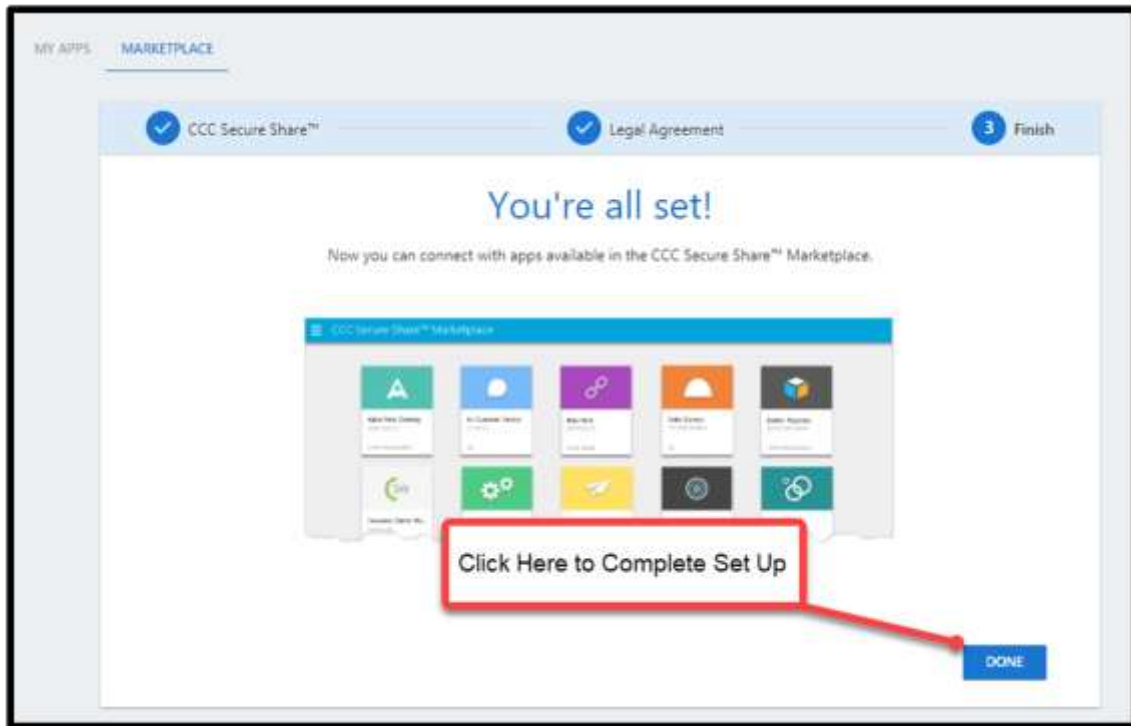
2. The next screen will depend on whether you've already configured Secure Share. If you don't see the following screen, proceed directly to STEP 5.



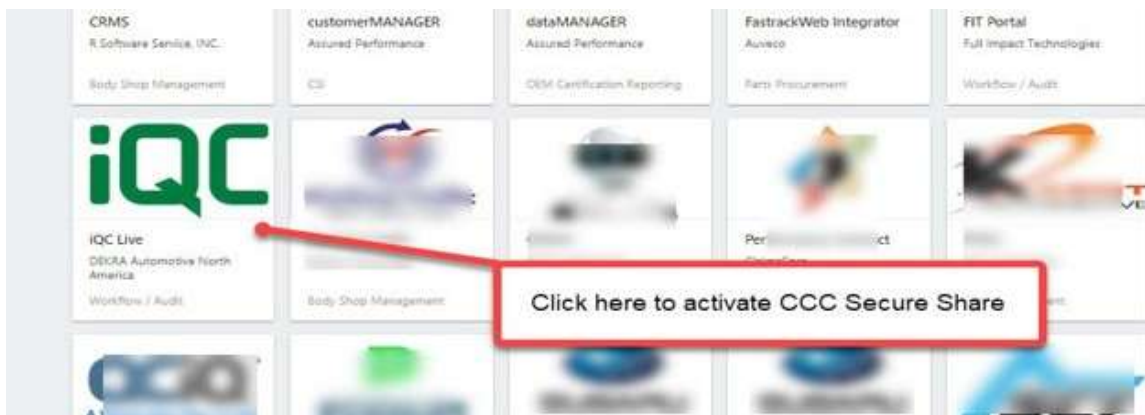
3. Once you click "GET STARTED", you will be taken the "MARKETPLACE", where you will be asked to agree to the standard terms and conditions, as seen in the following two screen shots:



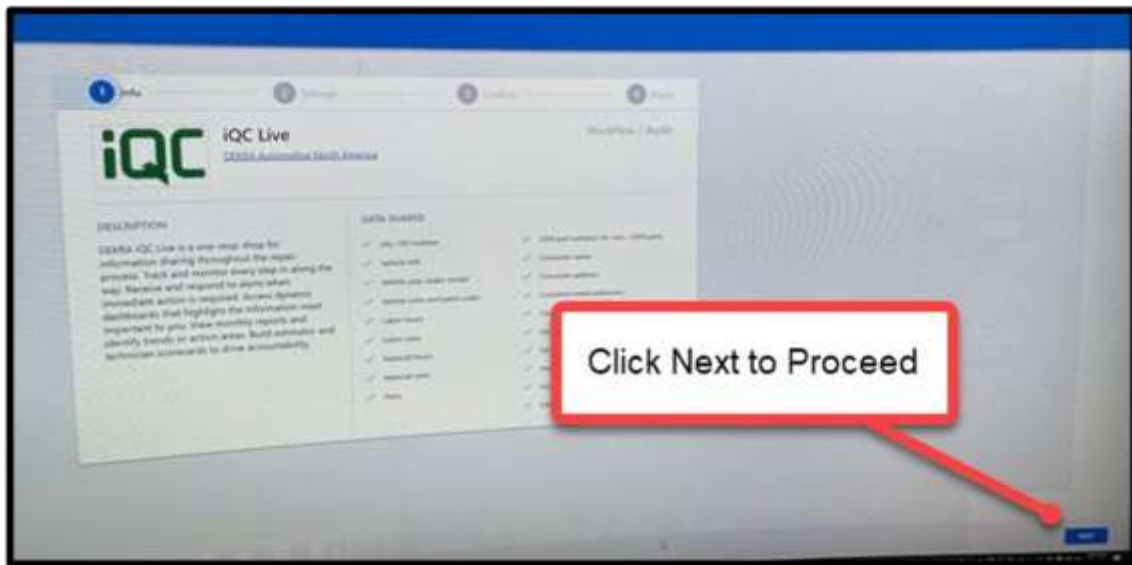
4. Once you've accepted the Terms & Conditions of using CCC Secure Share, you'll need to click "DONE", as seen below:



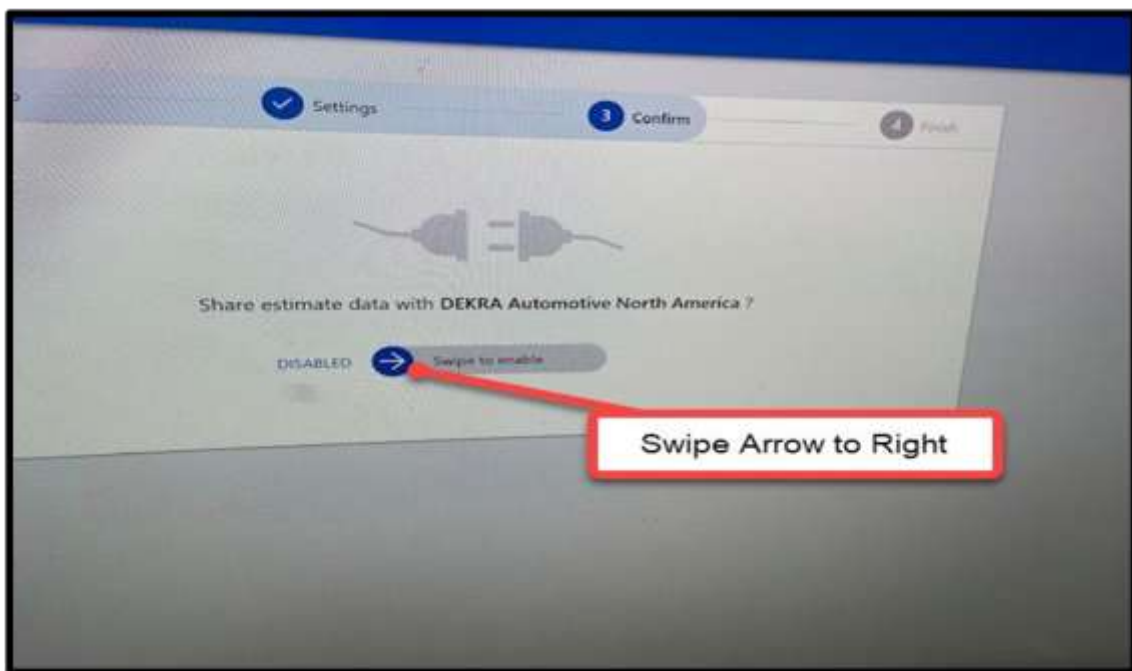
5. The next screen will be the "MARKETPLACE", where you will see a collection of icons from various companies that are authorized by CCC to connect directly with collision centers that choose to participate. (If you've already activated CCC Secure Share, this will be the first screen you see once you've entered "Configure" mode). The next task will be to select "iQCLive" from the Marketplace Dashboard, as seen below:



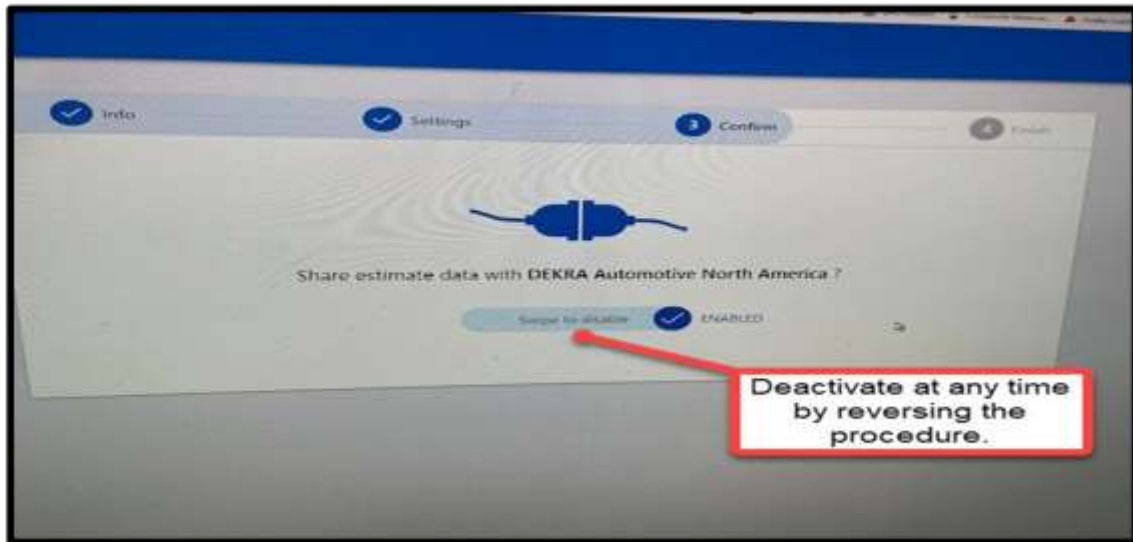
6. Follow the easy to use on-screen-guide to activate and enable iQCLive by DEKRA. This is what powers the BMW Parts Restrictions Portal.



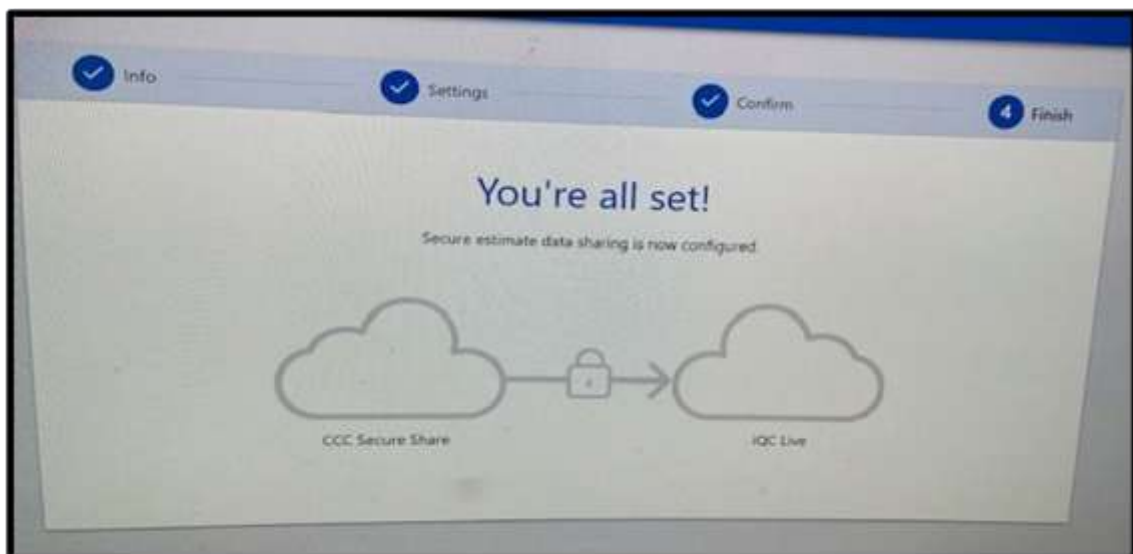
7. To begin using CCC Secure Share with iQCLive and the BMW Parts Restrictions Portal, you must enable the connection, shown below:



8. Please note: The active connection of CCC Secure Share and iQCLive is not required for requesting restricted parts. It is highly recommended to use the connection as it significantly reduces the time entering your requests. You do have the option of disabling the connection if you no longer wish to participate, as seen below:



9. The last screen you should see is the "ALL SET" screen shown below, this will ensure an active connection between CCC and the BMW Parts Restrictions Portal:



10. You are now ready to begin using the BMW Parts Restrictions Portal with the enhanced CCC connection and iQCLive by DEKRA!